

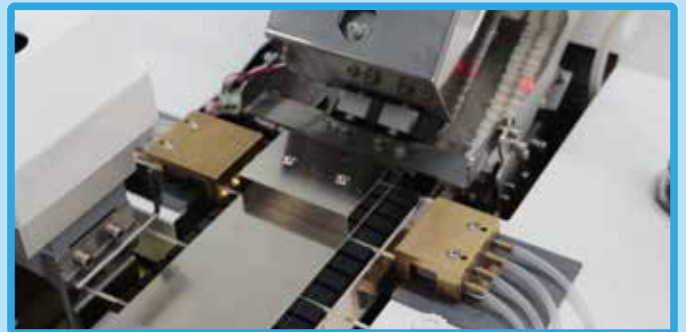
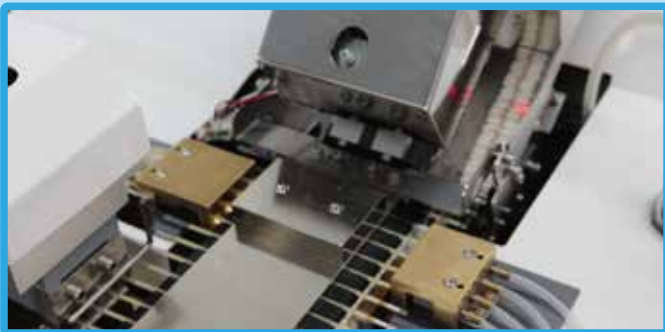
FHK

SEMPAQ-80

Semen packaging machine



SEMPAQ80 features to achieve stable filling, sealing operation and excellent speed. Switching from quad to single filling is controlled by electronic scale.



FUJIHIRA INDUSTRY CO.,LTD.

SEMPAQ-80 Semen packaging machine

Screen color informs status of the machine movement.



Blue: Settings screen



Green: Normal operation



Orange: Pause



Red: Error detected



The straw guide attachment on the needles works for smooth insertion.



The scale control enables to minimize semen residue.

Specifications

Model	SEMPAQ80
Production speed	Max. 13,500pcs
Touch panel	LCD, Display area 4.3inch (95.0 x 53.9mm)
Straw size	0.5mL or 0.25mL (Switchable upon request)
Straw conveyer for jet printer	Possible to assemble (Option)
Dimensions	520 x 510 x 506mm (W x D x H) Main unit only 735 x 520 x 506mm including straw conveyer
Weight	68.3kg, Main unit only Approx. 76kg including straw conveyer
Power source	AC100V / AC200, 220, 240V
Power consumption	400W (Main unit only) 500W (including straw conveyer)

FHK FUJIHIRA INDUSTRY CO.,LTD.
 6-11-6 Hongo Bunkyo-ku Tokyo 113-0033 Japan
 Tel: +81-3-3812-2270 Fax: +81-3-3812-3663
<http://www.fujihira.co.jp/>