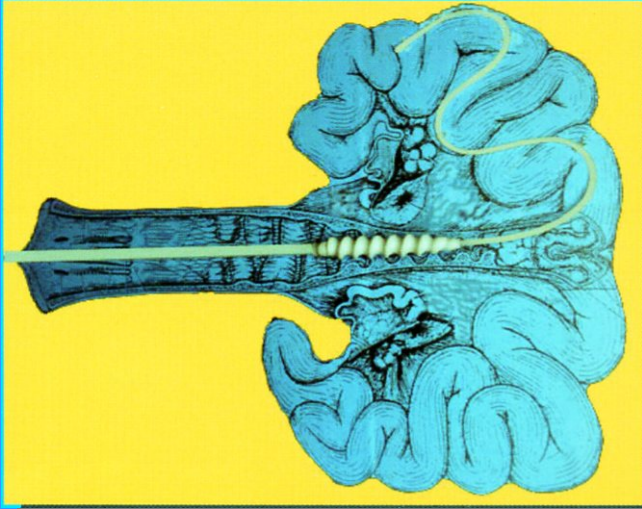


For Swine, Non-surgical embryo transfer



Deep Intra-uterine transfer catheter

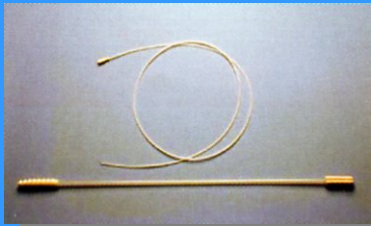
PAT.P



Inserted catheter to uterine horn
(image)



Piglets, produced by embryo transfer



Outer & inner catheter



Side eye of inner catheter



How to use

Promising method for improving efficiency

One set is composed of outer guide catheter, which reaches to the cervical canal, and inner catheter of 120cm length with side eye. The inner catheter reaches the uterine horn, 30cm or more deeper from the inserted edge of outer catheter. The time, necessary for embryo transfer is about 5minutes from insertion of outer catheter.

69% of high fertility was reported in the case of embryo transfer to the recipient, of which the estrus cycle is 2days later than the day-old of embryo.

Name	Spiral guide catheter (outer)	Intra-uterine catheter (inner)
Material	Polyethylene, Polypropylene	Polyethylene
Dimensions	Length 60cm Outer dia. of point 15mm Outer dia. of main unit 7.0mm	Length 120cm Outer dia. 3mm Inner dia. 0.5mm
Package	10pcs/box, sterilized	

* Disposable products

FHK

Fujihira Industry Co., Ltd.
6-11-6 Hongo, Bunkyo-ku, Tokyo, 113-0033
Tel: +81-3-3812-2270 Fax: +81-3-3812-3663
URL: <http://www.fujihira.co.jp>
E-mail : overseas@fujihira.co.jp